

PR619**LADIES' CONTRAST COOLCHECKER POLO**

CARTON	PACK	NO. SKU'S
36	6	72

**Fabric**

100% Polyester Pique, 155gsm

Colours

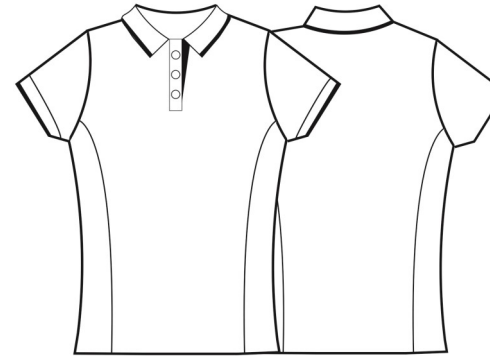
Black/ Lime, Black/Red, Black/ Turquoise, Dark Grey/ Silver, Royal/ White, Black/Orange. Black/Sunflower, Red/ Black, Black/ Purple, Black/White, Sunflower/Red, Navy/White

Sizes

XS, S, M, L, XL, 2XL

Features

- Contrast tipped polo
- Side panels for a fitted shape
- Three button placket
- Ribbed knit collar and cuffs
- Side vents
- Coolchecker® wicking fabric for air flow and moisture management

Country of Origin China**Carton Dimensions** 60 cm x 40cm x 38cm**Carton Weight** 13 kg approx.**VAT Code** 6106 20 0000

Colour	Pantone	C	M	Y	K
Black	0	0	0	0	100
Lime	382	29	0	96	0
Red	200	0	100	65	15
Turquoise	312	89	0	11	0
Dark Grey	424	30	20	19	60
Silver	428c	0	0	0	23
Royal	286	100	60	0	6
White	White	0	0	0	0
Orange	1655	0	65	87	0
Sunflower	136c	0	27	79	0

Size	XS	S	M	L	XL	2XL
Bust to fit"	33	35	37	39	41	43
Bust to fit cm	84	89	94	99	104	109
Bust actual cm	88	94	100	106	114	122
DE,NL	36	38	40	42	44	46
FR,ES,PT	36	38	40	42	44	46
IT	40	42	44	46	48	50

Marketing Description

A smart choice for businesses looking for workwear that reflects company branding, these polo shirts offer a two-tone contrast colouring. The ribbed knit collar and cuffs is colour tipped as is the neckband and placket. There is a three button fastening on the placket for a casual unbuttoned look or smart fastened up style. The Coolchecker fabric is designed to draw moisture away from the body and encourage air flow, so the wearer remains fresh and cool throughout the day. Side panels create an aesthetically pleasing fitted style for women.



WASH DARK COLOURS SEPARATELY, WASH INSIDE OUT, DO NOT SOAK,
IRON ON REVERSE