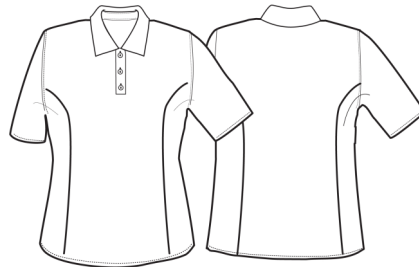


PR616**LADIES' COOLCHECKER PIQUE POLO**

| CARTON | PACK | NO. SKU'S |
|--------|------|-----------|
| 36 | 6 | 150 |


COOL
CHECKER


| Colour | Pantone | C | M | Y | K | Colour | Pantone | C | M | Y | K |
|--------------|---------|-----|-----|-----|-----|-------------|---------|-----|-----|-----|----|
| Aubergine | 5115 | 53 | 91 | 21 | 72 | Neon Pink | 806 | 0 | 75 | 15 | 0 |
| Black | 0 | 0 | 0 | 0 | 100 | Neon Green | 802 | 54 | 0 | 100 | 0 |
| Bottle | 560 | 69 | 0 | 60 | 76 | Neon Orange | 804 | 0 | 20 | 50 | 0 |
| Brown | 476 | 30 | 72 | 74 | 84 | Neon Yellow | 809 | 2 | 0 | 82 | 9 |
| Burgundy | 216c | 0 | 83 | 34 | 47 | Red | 200 | 0 | 100 | 65 | 15 |
| Dark Grey | 431c | 11 | 0 | 0 | 65 | Royal | 286 | 100 | 60 | 0 | 6 |
| Hot Pink | 214c | 0 | 100 | 24 | 4 | Sapphire | 300 | 99 | 51 | 0 | 0 |
| Kelly Green | 355 | 94 | 0 | 100 | 0 | Silver | 428 | 10 | 4 | 4 | 14 |
| Grey Melange | 425C | 48 | 29 | 26 | 76 | Strawberry | 186 | 2 | 100 | 82 | 6 |
| Lime | 382 | 29 | 0 | 96 | 0 | Sunflower | 136c | 0 | 27 | 79 | 0 |
| Light Blue | 2708 | 3 | 4 | 9 | 0 | Turquoise | 312 | 89 | 0 | 11 | 0 |
| Navy | 2766 | 100 | 87 | 0 | 34 | White | White | 0 | 0 | 0 | 0 |
| Purple | 269 | 82 | 98 | 5 | 26 | | | | | | |

Fabric

100% Polyester Pique, 155gsm

Colours

Aubergine, Black, Bottle, Brown, Burgundy, Dark Grey, Hot Pink, Grey Melange, Light Blue, Lime, Navy, Purple, Red, Royal, Sapphire, Silver, Strawberry, Turquoise, White, Sunflower, Neon Pink, Neon Green, Neon Orange, Neon Yellow, Kelly

Sizes

XS, S, M, L, XL, 2XL

Features

- Coolchecker® fabric for wicking moisture management and air flow
- Three Button Placket
- Extra body length
- Knitted rib collar
- Panelled detail for more fitted shape
- Quick dry for everyday use

Country of Origin

China

Carton Dimensions

59cm x 37cm x 24cm

Carton Weight

13.60 kg approx.

VAT Code

6106 20 0000

| Size | XS | S | M | L | XL | 2XL |
|-----------------------|----|----|-----|-----|-----|-----|
| Dress size | 8 | 10 | 12 | 14 | 16 | 18 |
| Bust to fit" | 33 | 35 | 37 | 39 | 41 | 43 |
| Bust to fit cm | 84 | 89 | 94 | 99 | 104 | 109 |
| Bust actual cm | 88 | 94 | 100 | 106 | 114 | 122 |
| DE,NL | 36 | 38 | 40 | 42 | 44 | 46 |
| FR,ES,PT | 36 | 38 | 40 | 42 | 44 | 46 |
| IT | 40 | 42 | 44 | 46 | 48 | 50 |
| Back length cm | 60 | 62 | 64 | 66 | 68 | 70 |

Marketing Description

A ladies fitting polo shirt which has side panel detail to flatter the female figure. A stylish knit collar and three button placket to the neckline make for a modern piece of workwear which acts as a smart alternative to a blouse. Designed to match our 'Colours' range in aprons and blouses, this item can be worn across industries and boasts wicking features that will help draw moisture away from the body under hot conditions.

