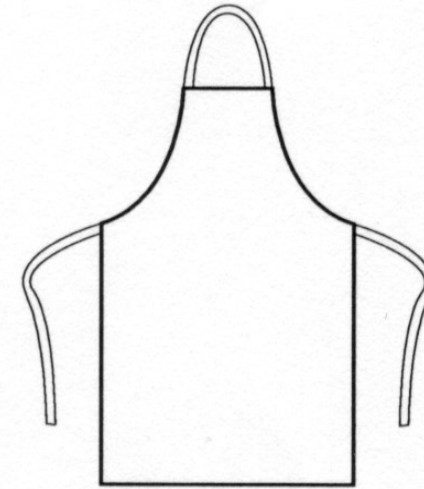


CARTON	PACK	NO. SKU'S
72	12	20

**PR102**  
**APRON**  
**COTTON (NO POCKET)**

**Fabric**

Heavy weight pre-shrunk 100% Cotton Twill. 240gsm

**Colours**

White, Black, Red, Dark Grey, Natural, Lime, Burgundy, Turquoise, Brown, Bottle, Purple, Navy, Apple, Aubergine, Hot Pink, Khaki, Orange, Royal, Silver, Steel

**Sizes**

One size

**Features**

- 100% Cotton Bib Apron
- Self fabric ties
- Width, 60cm
- Length from the waist, 62cm
- Total length, 87cm
- Absorbent cotton twill

**Country of Origin**

Bangladesh

**Carton Dimensions**

60cm x 40cm x 23cm

**Carton Weight**

18kg approx.

**VAT Code**

6211 42 1000

Colour	Pantone	C	M	Y	K
White	White	0	0	0	0
Black	Black	0	0	0	100
Red	200	0	100	65	15
Dark Grey	431c	11	0	0	65
Natural	1205	0	5	31	0
Lime	382	29	0	96	0
Burgundy	216c	0	83	34	47
Turquoise	312	89	0	11	0
Brown	476	30	72	74	84
Bottle	560	69	0	60	76

Colour	Pantone	C	M	Y	K
Purple	269	82	98	5	26
Navy	2766	100	87	0	34
Apple	360	64	0	80	0
Aubergine	5115	53	91	21	72
Hot Pink	214c	0	100	24	4
Khaki	7503	0	12	35	25
Orange	1655	0	65	87	0
Royal	286	100	60	0	6
Silver	428	10	4	4	14
Steel	6545	56	30	17	52

A kitchen or service Apron made with 100% heavyweight pre shrunk Cotton for durability. Available in twenty popular colours with self-fabric ties.



INDUSTRIAL LAUNDRING 85°C MAXIMUM